



MONTHLY MEMBERSHIP PROGRESS REPORT

District 27 A1

Results as of: 12/31/2017

GMT: MICHAEL MOLEND A

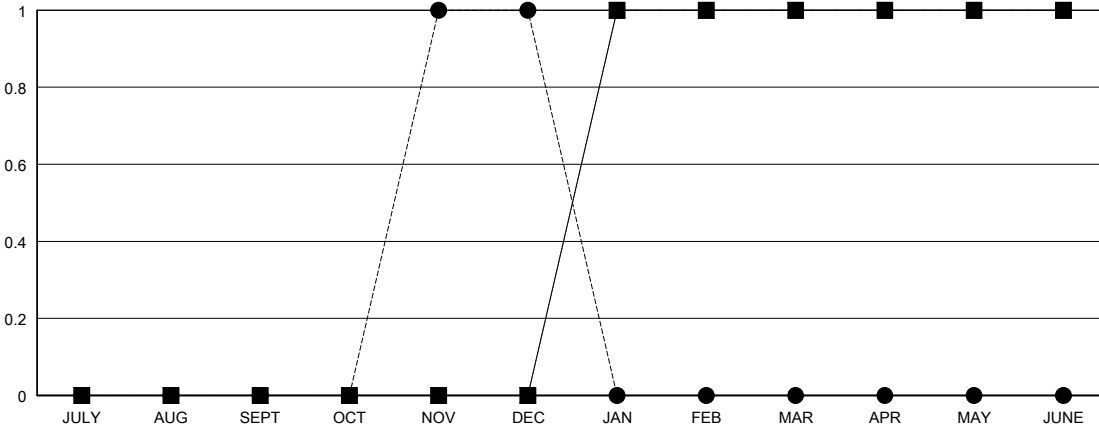
LOCATION WISCONSIN

GMT CA

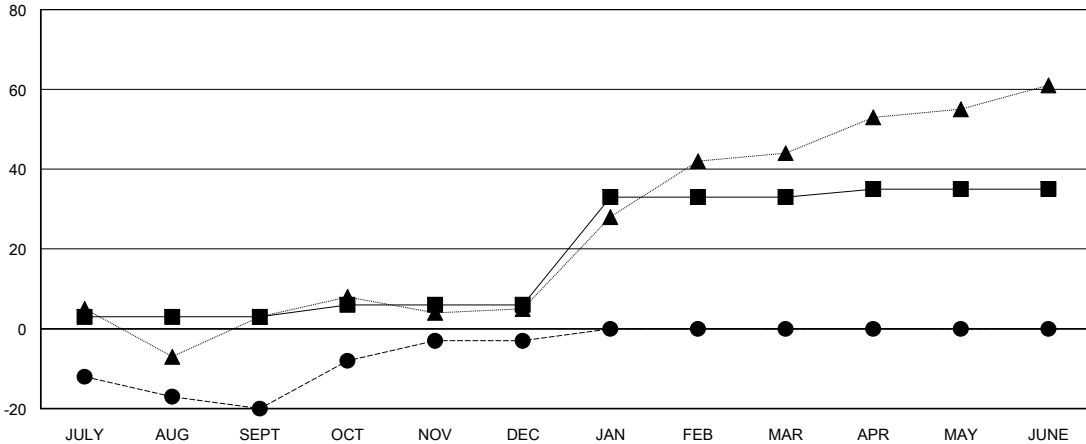
Clubs			
RESULTS FOR 2017-2018			
QUARTER	NEW CLUB GOAL	NEW CLUBS	DROPPED CLUBS
JULY/AUG/SEPT	0	0	1
OCT/NOV/DEC	0	1	0
JAN/FEB/MAR	1	0	0
APR/MAY/JUNE	0	0	0

Members			
RESULTS FOR 2017-2018			
QUARTER	MEMBER GROWTH NET GOAL	MEMBER GROWTH ACTUAL	DROPPED MEMBERS ACTUAL (including transfers)
JULY/AUG/SEPT	3	38	54
OCT/NOV/DEC	3	79	56
JAN/FEB/MAR	27	0	0
APR/MAY/JUNE	2	0	0

GOALS AND ACTUAL NEW CLUBS CUMULATIVE



GOALS AND ACTUAL MEMBERS CUMULATIVE



DROPPED CLUBS: 1

27 CLUBS OF 52 ADDED 1 OR MORE NEW MEMBERS
--

GENDER DISTRIBUTION	
MALE	1,459 (79.55%)
FEMALE	375 (20.45%)
Women Percentage Fiscal Year Goal: 23%	

DROPPED MEMBERS	
DECEASED	12
CLUB CANCELLED	0
OTHER	98
TOTAL	110

[CLICK HERE FOR CUMULATIVE MEMBERSHIP DATA](#)

TOTAL FAMILY UNIT MEMBERS	296
FAMILY MEMBERS PAYING HALF DUES	156